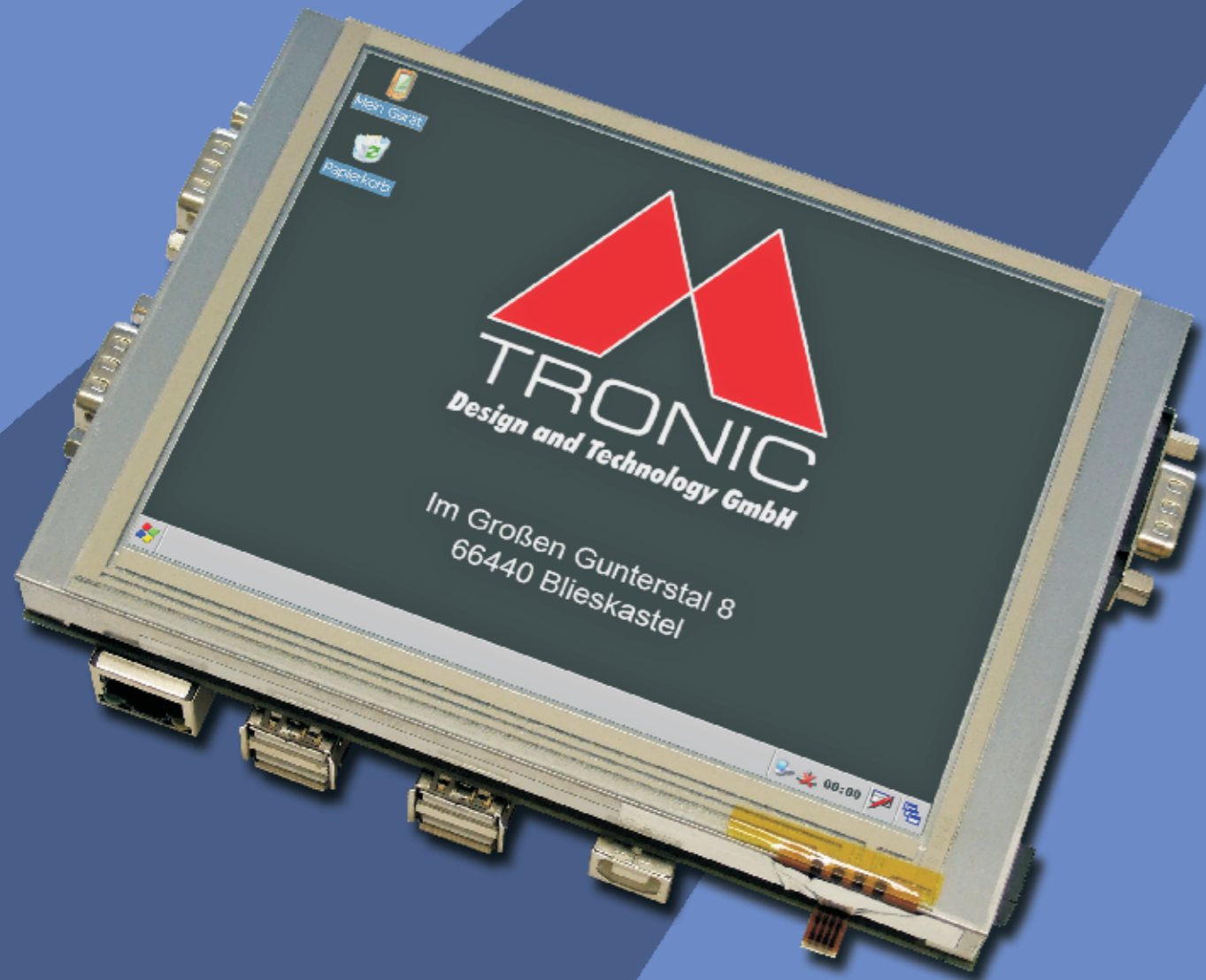


MT-BASE

Computer-on-display system



MT-BASE

The MT-BASE Computer-on-Display system offers the perfect basis for the implementation of your embedded applications.

Using its 5,7" TFT- display and its advanced connectivity the system is well suited for a multitude of applications. With its compact dimensions it is easy to integrate into your development.

The use of the MT-BASE offers you to upgrade your product with a graphical touchscreen user interface with little effort.

The ease of use of the MT-BASE offers you to upgrade your product with a graphical touchscreen user interface.

Thanks to its quick 400 MHz ARM9 processor, its 64 or 128 MB SDRAM memory and its 128-512 MB flash memory, the MT-COM which is a part of the MT-BASE provides more than satisfactory resources to run a multitude of applications. In particular, using the Windows CE or Linux operating system decidedly simplifies and reduces the time required to develop your software, as low-level programming is no longer necessary and therefore the usual application programming under Windows or Linux is possible.

Since the hardware is already available, you can immediately begin with the implementation of your software. Therefore the total development time of your product will be significantly shortened.

Due to the large number of interfaces a simple connection to the rest of your hardware and a large number of applications is guaranteed.

Technical data:

MT-COM

- Samsung S3C2440 ARM9 CPU with 400 MHz
- 128 - 512 MB NAND flash
- 64 / 128 MB SDRAM
- JTAG interface

MT-BASE

- 5,7" TFT touchscreen display with LED backlight, 262.144 colors and the resolution VGA (640x480) or QVGA (320x240)
- 2 x 100 Pin-Connector to connect the MT-COM module
- Ethernet interface with 100 MBit and RJ45 jack
- 3 x USB 2.0 Host interfaces USB-A jack
- 1 x USB 1.1 Host interface USB-A jack
- 1 x USB 1.1 Client interface USB-B jack
- 2 x serial interfaces with 9-pol SUB-D plug
- CAN interface (9-pin SUB-D)
- Audio interface with line in, line out and microphone 3.5 mm stereo sockets
- SD Card slot with push/push action
- Reset button
- Hollow-jack socket to connect to an external 5 volt power supply unit
- Voltage supply: +6 VDC
- Power consumption: ca. 800 mA
- Operating temperature: 0°C ... 70°C
- Dimensions (L x B x H): 162 mm x 110 mm x 32 mm
- Weight: approx. 350 g



CE compliant to the following directives:
EN 55022
EN 61000-4-2, EN 61000-4-3, EN 61000-4-4, EN 61000-4-5, EN610004-6

Subject to technical modifications.

ARM9 is a registered trademark of ARM Ltd.
Windows CE is a registered trademark of Microsoft Corp.



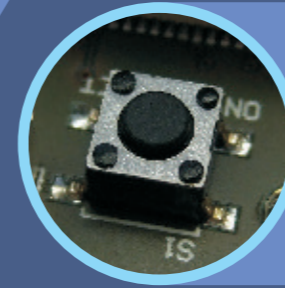
M-Tronic Design and Technology GmbH
Im Großen Gunterstal 8
66440 Blieskastel
Germany
Tel.: 06842/96125-0 Fax: 06842/96125-99
www.m-tronic-dt.de info@m-tronic-dt.de



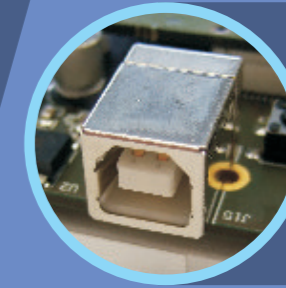
100 MBit RJ45



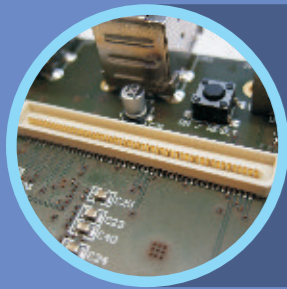
3 x USB 2.0
1 x USB 1.1
Host interface
USB-A socket



Reset button



USB 1.1 client
USB-B socket



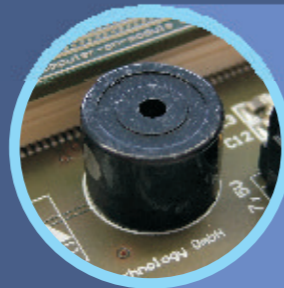
2 x 100 Pin-
connector to connect the
MT-COM module



2 x serial
interface
9-pin SUB-D plug



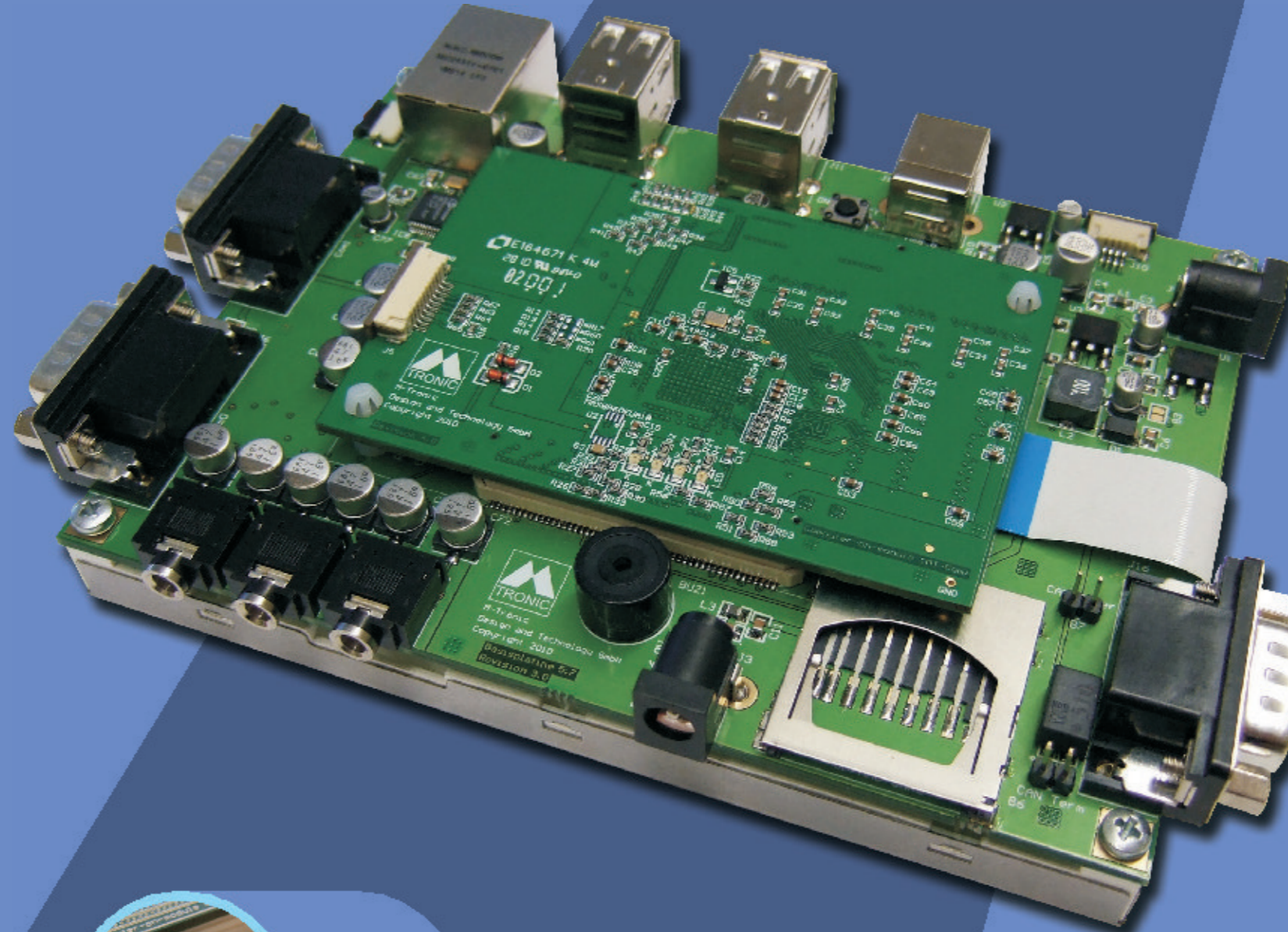
Audio line in,
line out and mic



Buzzer



Supply voltage 6V DC
DC socket

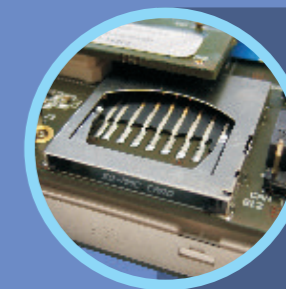


• **Applications:**

- General control
- Domestic control
- Industrial control
- Webinterface
- Video applications
- MP3-Player
- Fileserver
- Pocket PC
- Data acquisition
- Navigation
- Testing instruments
- Pay terminal
- Information terminal
- Thin client



CAN interface
(9-pin SUB-D)



SD/MMC
SDIO slot