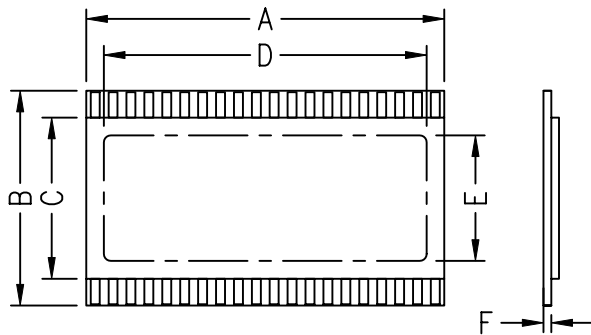


## CUSTOM MADE LCD

### 1. LCD Dimensions



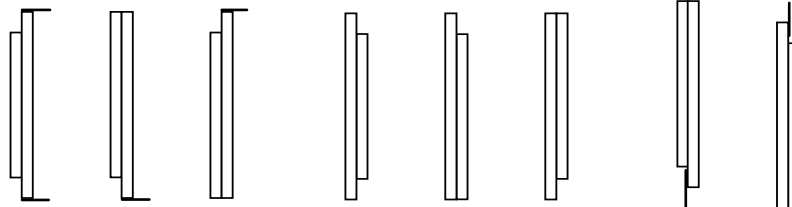
A: Length				mm
B: Width				mm
C: Width				mm
D: Length viewing area				mm
E: Width viewing area				mm
F: Glass Thickness	1,1 mm	0,7 mm	0,55 mm	
Pin-Pitch:	2,54 mm	2,0 mm	1,8 mm	
Pin-Length:	6,35 mm			mm
FPC-Pitch :	0,5 mm			
FPC-Length:				mm

### 2. LCD Configuration

Pin Connector

Rubber Connector

FPC



Viewing Direction:

6 o'clock

12 o'clock

### 3. Electrical Characteristics

Type:	TN			STN		
	HTN			FSTN		
Drive Method:	static	MUX:	BIAS:		Voltage:	V
Display Mode:	reflective			transflective	transmissive	
	positive			negative		
Temperature Range:	Operating Temperature	0°C bis +50°C		-	°C bis +	°C
	Storage Temperature	-20°C bis +70°C		-	°C bis +	°C
Backlight:	yes	no				
Color:	white	blue	green	yellow-green	red	other
Backlight Mode:			LED			
Application:	indoor	outdoor		UV-Protection		
Soldering Method (Pins):			wave-soldering		hand-soldering	

### 4. Contact

Quantity: pcs. / year      Field of Application:

Name:      Company:

Phone:      e-mail: